

0211046

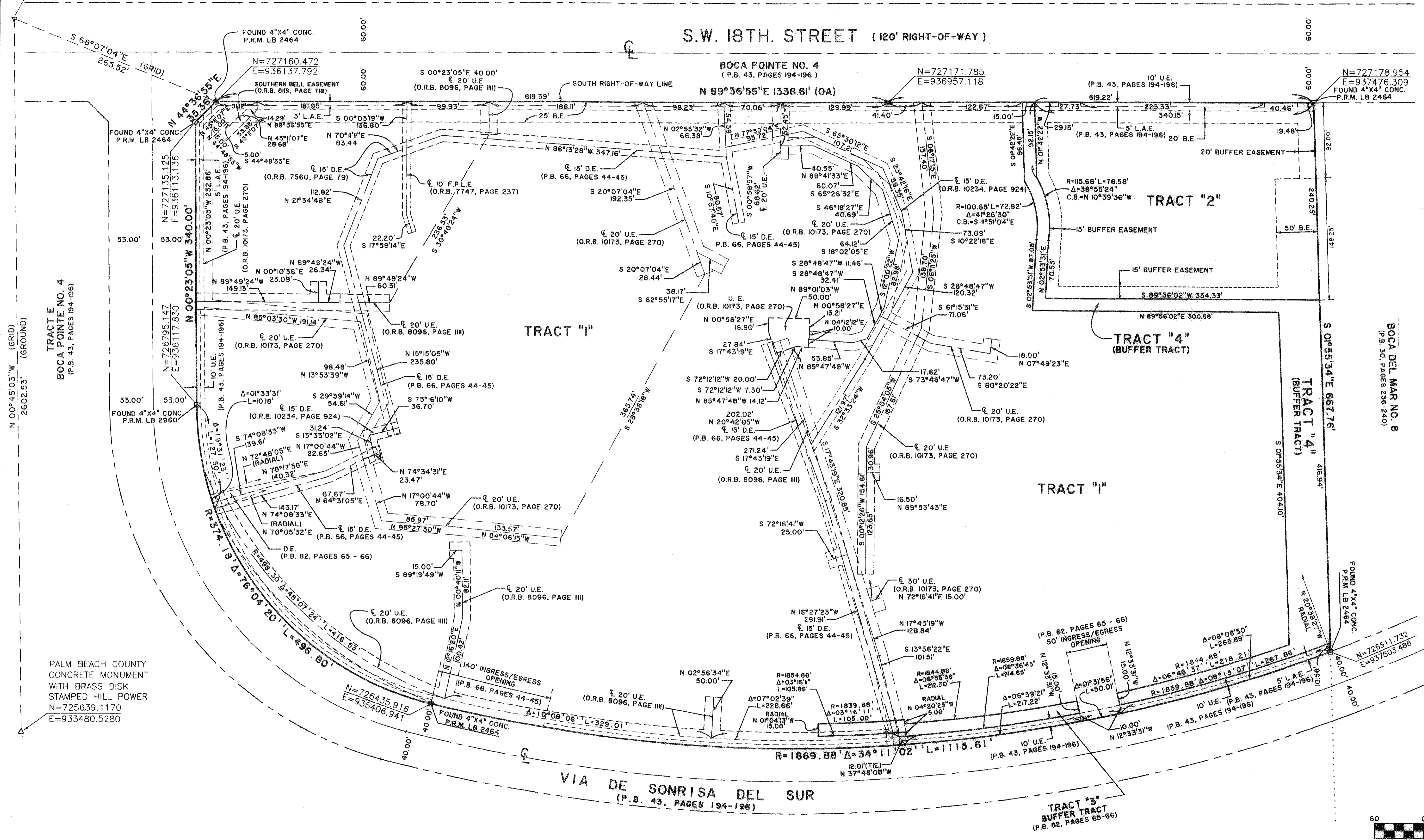
STRATFORD COURT II, P.U.D. REPLAT

A PART OF BOCA POINTE, PLANNED UNIT DEVELOPMENT
LYING IN SECTION 34, TOWNSHIP 47 SOUTH, RANGE 42 EAST,
BEING A REPLAT OF STRATFORD COURT II, P.U.D., AS RECORDED IN PLAT
BOOK 82, PAGES 65 AND 66, PUBLIC RECORDS OF PALM BEACH COUNTY, FLORIDA.
SHEET 2 OF 2

23

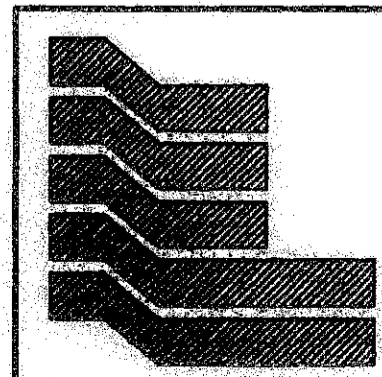
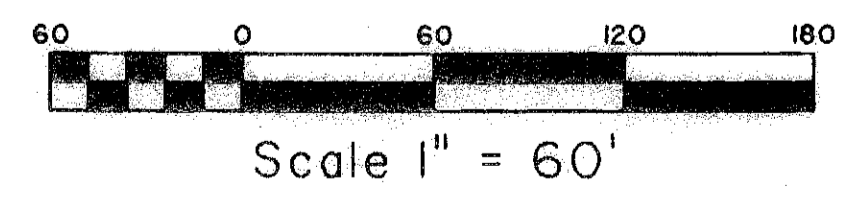
PALM BEACH COUNTY
CONCRETE MONUMENT
WITH BRASS DISK
STAMPED TUG
N=728241.4230
E=933446.4180

STATE OF FLORIDA SS
COUNTY OF PALM BEACH
THIS PLAT WAS FILED FOR RECORD AT
____ M., THIS ____ DAY OF ____ 2008
AND DULY RECORDED IN PLAT BOOK NO. ____
ON PAGE ____
SHARON R. BOCK,
CLERK AND COMPTROLLER,
PALM BEACH COUNTY
BY _____ D.C.



COORDINATE NOTE:
STATE PLANE COORDINATES SHOWN ARE GRID DATUM, NAD 83 1990
ADJUSTMENT, FLORIDA EAST ZONE, COORDINATE SYSTEM 1983 STATE
PLANE, TRANSVERSE MERCATOR PROJECTION
LINEAR UNIT = US SURVEY FEET
ALL DISTANCES ARE GROUND
SCALE FACTOR = 1.0000290
GROUND DISTANCE X SCALE FACTOR = GRID DISTANCE
N 89°36'55"E (PLAT BEARING) 00°24'23" COUNTERCLOCKWISE ROTATION
N 89°12'32"E (GRID BEARING) PLAT TO GRID
THE SOUTH RIGHT-OF-WAY LINE OF S.W. 18 TH. STREET
BOCA POINTE NO. 4 (P.B. 43, PAGES 194-196)

TRACT E
BOCA POINTE NO. 4
(P.B. 43, PAGES 194-196)



Landmark Surveying & Mapping Inc.
1850 Forest Hill Boulevard
Ph. (561) 433-5405 Suite 100 W.P.B. Florida
LB # 4396

**STRATFORD COURT II,
P.U.D. REPLAT**

D:\ispott\EPW\13\jobs\2005\2005_F_2.mxd Nov 28 08:34:05 2007 PLOTTED BY JOHN STEWART